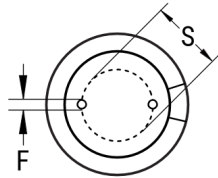


SIDE VIEW



TERMINAL END VIEW



Click [here](#) for the 3D model.

Dimensions	
D	8mm +/-0.5mm
L	20mm +2mm
S	3.5mm +/-0.5mm
LL Negative	15mm MIN
LL Positive	20mm MIN
F	0.6mm NOM

Packaging Specifications	
Packaging	Bulk, Bag

General Information

Series	ESY
Dielectric	Aluminum Electrolytic
Description	LowZ Single Ended Aluminum Electrolytic
Features	Low Z
RoHS	Yes
Lead	Wire Leads
AEC-Q200	No

Specifications

Capacitance	470 uF
Capacitance Tolerance	20%
Voltage DC	25 VDC, 32 VDC (Surge)
Temperature Range	-40/+105°C
Rated Temperature	105°C
Life	3000 Hrs
Dissipation Factor	14% 120Hz 20C
ESR	0.041 Ohms (100kHz 20C)
Ripple Current	1250 mAmps (100kHz 105C)
Leakage Current	117.5 uA (2min 20°C)
Impedance Ratio at -25C	2
Impedance Ratio at -40C	3