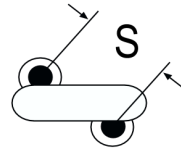
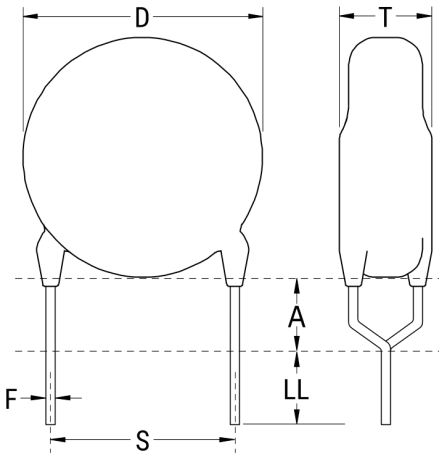


ERP610W222KYRD

Aliases (C835YR222K760X, ERP610VH4220KYRD)

Obsolete

ERP610 SFTY X1-760 Y1-500, Ceramic, 2200 pF, 10%, 760 VAC (X1), 500 VAC (Y1), Y5U, 10mm



The measurement position of Lead Spacing (S) and Width (V) is critical in straight lead capacitors.

Click [here](#) for the 3D model.

General Information

Series	ERP610 SFTY X1-760 Y1-500
Style	Radial Disc
RoHS	Yes
Termination	Tin
Lead	V-Crimp
Qualifications	UL, CSA, CAN, ENEC, VDE
AEC-Q200	No

Specifications

Capacitance	2200 pF
Capacitance Tolerance	10%
Voltage AC	760 VAC (X1), 500 VAC (Y1)
Temperature Range	-40/+125°C
Temperature Coefficient	Y5U
Dissipation Factor	2.5%
Insulation Resistance	10 GOhms
Safety Class	X1/Y1

Dimensions

D	12mm MAX
T	5mm MAX
S	10mm +/-0.8mm
F	0.6mm +/-0.05mm
V	2.1mm +/-0.5mm

Packaging Specifications

Packaging T&R, H0 = 16mm, Component Pitch = 25.4mm