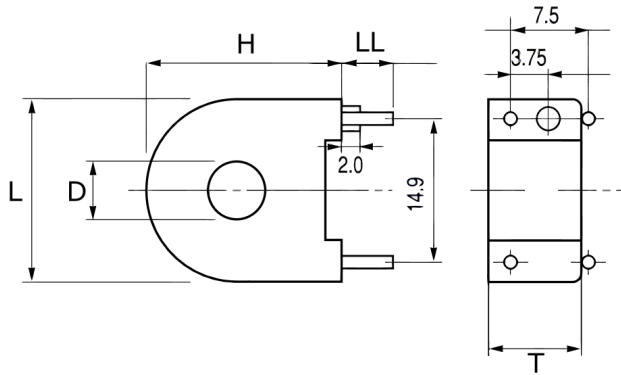


## CT-07-50

Aliases (USEN0750000000)

KEMET, CT, Current, Round - Toroidal, AC, Overcurrent/Current Detection, High Sensitivity, High Performance



Click [here](#) for the 3D model.

### Dimensions

D	5.9mm NOM
L	19mm NOM
H	20.2mm NOM
T	10mm MAX
LL	5.5mm +/-0.5mm

### Packaging Specifications

Packaging	Tray
Packaging Quantity	1200
Typical Component Weight	5.4 g

### General Information

Series	CT
Type	Current
Style	Round - Toroidal
Description	Low Alternating Current Sensor
Features	Overcurrent/Current Detection, High Sensitivity, High Performance
Lead	4 Wire Leads
RoHS	Yes
REACH	Yes
Notes	0.8 mm Diameter Pin Connectors

### Specifications

Temperature Range	-20/+80°C
Miscellaneous	Materials = Phenolic Resin Case, Epoxy-Filled. 500 turns.